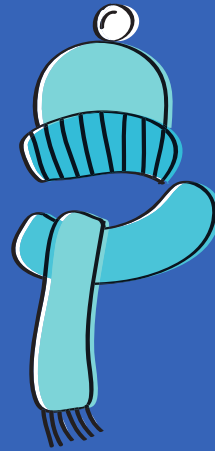


PACKING FOR THE SEASON

Cold Temperatures



- GLOVES/SCARF/HAT
- WATERPROOF JACKET/TROUSERS
- WELLIES/WALKING BOOTS
- SPARE SOCKS
- LAYERS & THERMALS
- PLASTIC BAGS FOR WET ITEMS



Warm Temperatures



- LIGHT LAYERS
- SWIMWEAR
- HIGH FACTOR SUN CREAM
- SUN HAT & SUNGLASSES
- INSECT REPELLENT
- PLASTIC BAGS FOR WET ITEMS
- BEACH TOWEL
- LIP BALM

